

# EARLY LEARNING GUIDELINES SERIES

For Early Educators

NO COST



**\*VIRTUAL SESSIONS\***

**\*IN-PERSON SESSIONS\***

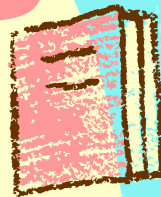
## SOCIAL EMOTIONAL

In-Person-ESU 5  
May 20th  
9:00-AM-3:00 PM  
\*Lunch will be provided

**PARTICIPANTS MUST ATTEND ALL THREE SESSIONS IN ORDER TO RECEIVE CREDIT FOR THE DOMAINS**

## APPROACHES TO LEARNING

Via Zoom  
March 21  
March 27  
March 28th  
3:45-5:45 PM



## SCIENCE

In-Person-ESU 5  
May 22nd  
9:00 AM-3:00 PM  
\*Lunch will be provided

## MATH

Via Zoom  
April 2nd  
April 4th  
April 9th  
3:45-5:45 PM



## LANGUAGE/LITERACY

In-Person-ESU 5  
May 29th  
9:00 AM-3:00 PM  
\*Lunch will be provided

## HEALTH AND PHYSICAL

Via Zoom  
April 22nd  
April 29th  
May 1st  
3:45-5:45 PM



## CREATIVE ARTS

In-Person-ESU 5  
May 30th  
9:00 AM-3:00 PM  
\*Lunch will be provided

REGISTER HERE

[HTTPS://FORMS.GLE/VIU8N3YTHYCXQXX67](https://forms.gle/viu8n3ythycxqxx67)

ESU 5

EDUCATIONAL SERVICE UNIT 5